



THE STAR
RESIDENCES
GOLD COAST

1 Bed + 1 Bath
+ Study Residence

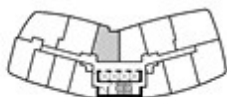
Tower: 1 Type: C
Unit N°: 13 Levels: 22 - 53

Internal Area: 58m²
Balcony Area: 5m²
Total Area: 63m²

Residence Number

12213	13113	14013	14913
12313	13213	14113	15013
12413	13313	14213	15113
12513	13413	14313	15213
12613	13513	14413	15313
12713	13613	14513	
12813	13713	14613	
12913	13813	14713	
13013	13913	14813	

Location



DISCLAIMER

The contents of this page, including all drawings and plans, have been prepared on an indicative basis for illustrative purposes only, do not necessarily reflect the final design or layout, are not necessarily to scale, and may be subject to change without notice. While the information in this page has been prepared with due care, to the maximum extent permitted by law, Destination Gold Coast Consortium, comprising Destination Gold Coast Pty Ltd, The Star Entertainment Group, F&B East Consortium and Ucode US-F&B Enterprises and their related entities, employees, officers, directors and agents do not make any representation or warranty about the accuracy or completeness of the information in this document and exclude any liability arising in connection with this document.



THE STAR
RESIDENCES
GOLD COAST

1 Bed + 1 Bath
Residence

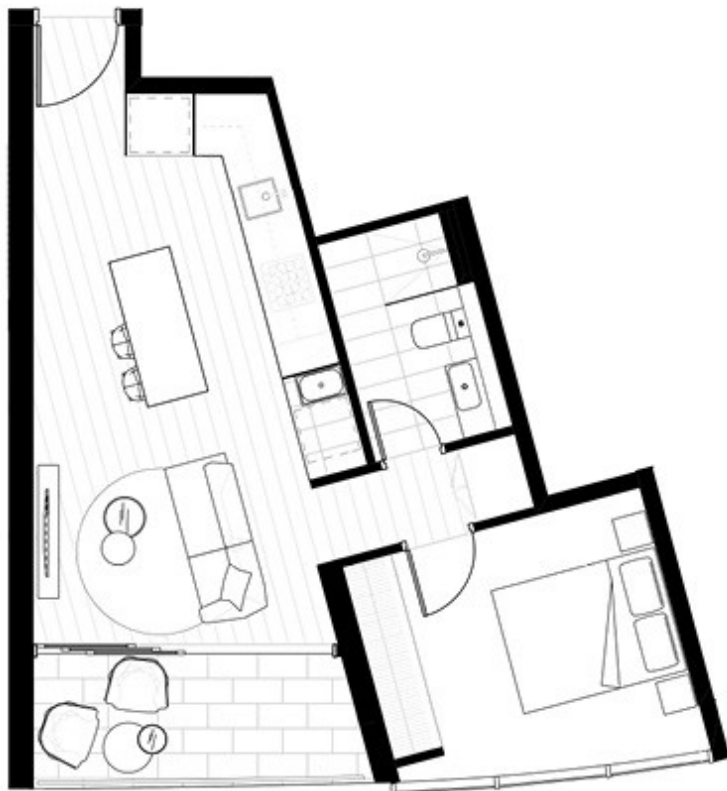
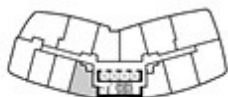
Tower: 1 Type: A
Unit No: 7 Levels: 21 - 53

Internal Area: 47m²
Balcony Area: 7m²
Total Area: 54m²

Residence Number

12107	13007	13907	14807
12207	13107	14007	14907
12307	13207	14107	15007
12407	13307	14207	15107
12507	13407	14307	15207
12607	13507	14407	15307
12707	13607	14507	
12807	13707	14607	
12907	13807	14707	

Location



DISCLAIMER

The contents of this page, including all drawings and plans, have been prepared on an indicative basis for illustrative purposes only do not necessarily reflect the final design or layout, are not necessarily to scale, and may be subject to change without notice. While the information in this page has been prepared with due care, to the maximum extent permitted by law, Destination Gold Coast Consortium (comprising Lend Lease (UK) Ltd, The Star Entertainment Group, F&F East Consortium and Lend Lease US-F&F Enterprises) and their related entities, employees, officers, directors and agents do not make any representation or warranty about the accuracy or completeness of the information in this document and exclude any liability arising in connection with this document.



THE STAR
RESIDENCES
GOLD COAST

2 Bed + 1 Bath
Residence

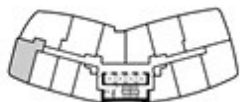
Tower: **1** Type: **D**
Unit N^o: **10** Levels: **21 - 53**

Internal Area: **61m²**
Balcony Area: **9m²**
Total Area: **70m²**

Residence Number

12110	13010	13910	14810
12210	13110	14010	14910
12310	13210	14110	15010
12410	13310	14210	15110
12510	13410	14310	15210
12610	13510	14410	15310
12710	13610	14510	
12810	13710	14610	
12910	13810	14710	

Location



DISCLAIMER

The contents of this page, including all drawings and plans, have been prepared on an indicative basis for illustrative purposes only, do not necessarily reflect the final design or layout, are not necessarily to scale, and may be subject to change without notice. While the information on this page has been prepared with due care to the maximum extent permitted by law, Destination Gold Coast Consortium (Comprising Destination Gold Coast Pty Ltd, The Star Entertainment Group, Far East Consortium and Chow Tai Fook Enterprises) and their related entities, employees, officers, directors and agents do not make any representation or warranty about the accuracy or completeness of the information in this document and exclude any liability arising in connection with this document.



THE STAR
RESIDENCES
GOLD COAST

2 Bed + 2 Bath
+ MPR Residence

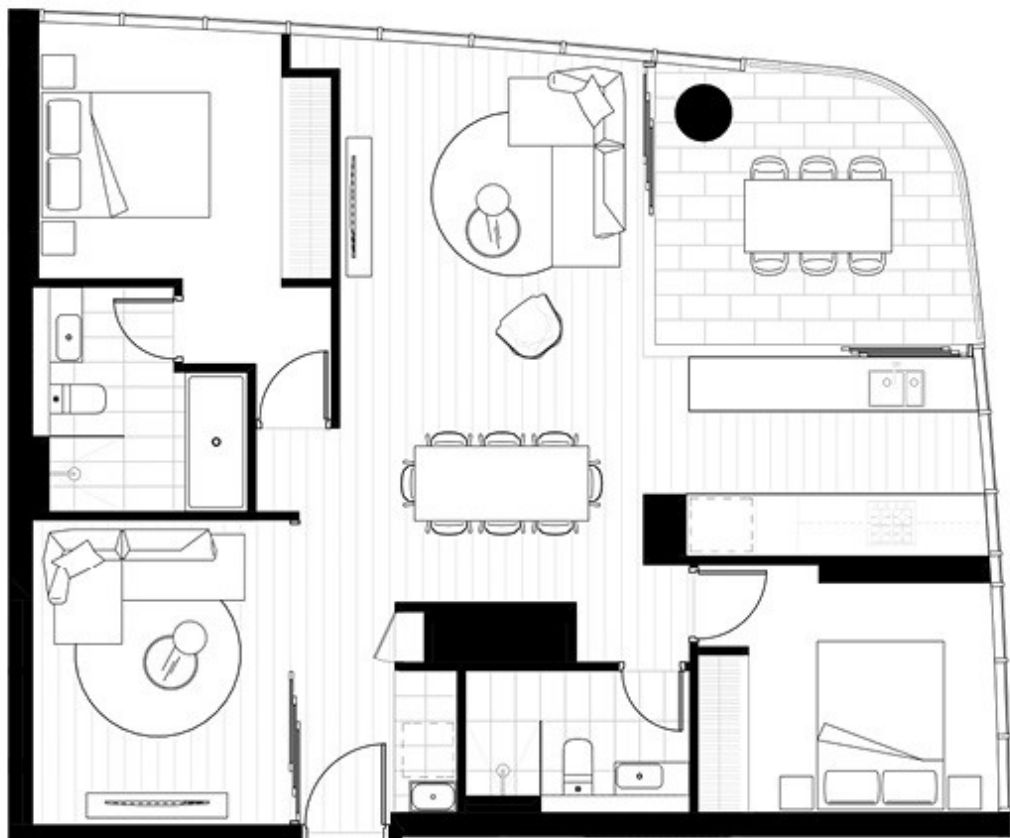
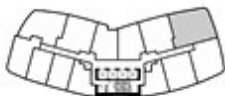
Tower: 1 Type: J
Unit N°: 3 Levels: 22 - 53

Internal Area: 96m²
Balcony Area: 13m²
Total Area: 109m²

Residence Number

12203	13003	13803	14603
12303	13103	13903	14703
12403	13203	14003	14803
12503	13303	14103	14903
12603	13403	14203	15003
12703	13503	14303	15103
12803	13603	14403	15203
12903	13703	14503	15303

Location



DISCLAIMER

The contents of this page, including all drawings and plans, have been prepared on an indicative basis for illustrative purposes only, do not necessarily reflect the final design or layout, are not necessarily to scale, and may be subject to change without notice. While the information on this page has been prepared with due care, to the maximum extent permitted by law, Destination Gold Coast Consortium (comprising Destination Gold Coast Pty Ltd, The Star Entertainment Group, Far East Consortium and Chew Tai Pook Enterprise) and their related entities, employees, officers, directors and agents do not make any representation or warranty about the accuracy or completeness of the information in this document and exclude any liability arising in connection with this document.



THE STAR
RESIDENCES
GOLD COAST

**2 Bed + 2 Bath
Residence**

Tower: **1** Type: **G**
Unit N^o: **12** Levels: **22 - 53**

Internal Area: **77m²**
Balcony Area: **10m²**
Total Area: **87m²**

Residence Number

12212	13112	14012	14912
12312	13212	14112	15012
12412	13312	14212	15112
12512	13412	14312	15212
12612	13512	14412	15312
12712	13612	14512	
12812	13712	14612	
12912	13812	14712	
13012	13912	14812	

Location



DISCLAIMER

The contents of this page, including all drawings and plans, have been prepared on an indicative basis for illustrative purposes only, do not necessarily reflect the final design or layout, are not necessarily to scale, and may be subject to change without notice. While the information on this page has been prepared with due care, to the maximum extent permitted by law, Destination Gold Coast Consortium comprising Destination Gold Coast Pty Ltd, The Star Entertainment Group, Far East Consortium and Chew Tai Park Enterprise and their related entities, employees, officers, directors and agents do not make any representation or warranty about the accuracy or completeness of the information in this document and exclude any liability arising in connection with this document.



THE STAR
RESIDENCES
GOLD COAST

2 Bed + 1 Bath Residence

Tower: 1 Type: E
Unit N^o: 5 Levels: 30 - 53

Internal Area: 68m²

Balcony Area: 10m²

Total Area: 78m²

Residence Number

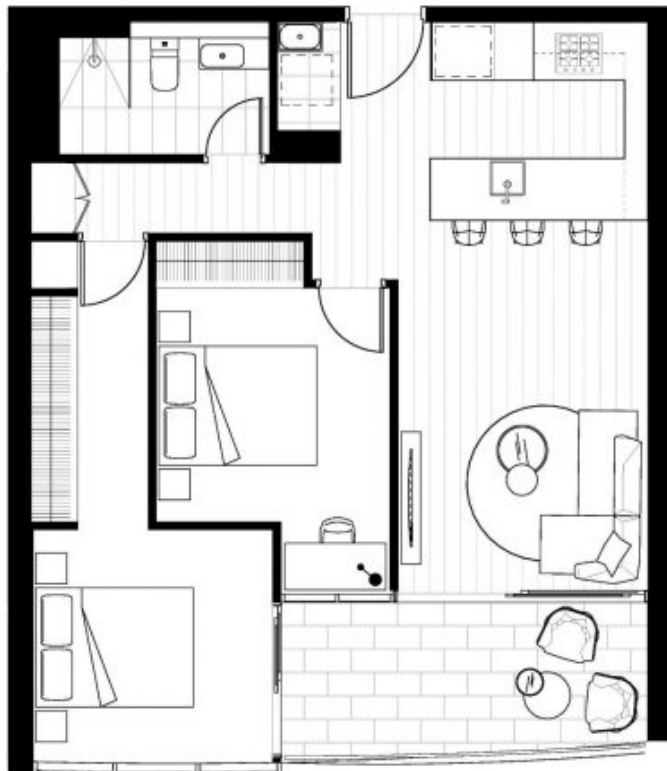
13005	13905	14805
13105	14005	14905
13205	14105	15005
13305	14205	15105
13405	14305	15205
13505	14405	15305
13605	14505	
13705	14605	
13805	14705	

Location



DISCLAIMER

The contents of this page, including all drawings and plans, have been prepared on an indicative basis for illustrative purposes only, do not necessarily reflect the final design or layout, are not necessarily to scale, and may be subject to change without notice. While the information in this page has been prepared with due care to the maximum extent permitted by law, Destination Gold Coast Consortium (including Destination Gold Coast Pty Ltd, The Star Entertainment Group, Far East Consortium and Chive To Fook Enterprises) and their related entities, employees, officers, directors and agents do not make any representation or warranty about the accuracy or completeness of the information in this document and exclude any liability arising in connection with this document.





THE STAR
RESIDENCES
GOLD COAST

2 Bed + 2 Bath
Residence

Tower: **1** Type: **1**
Unit No: **11** Levels: **22 - 53**

Internal Area: **84m²**

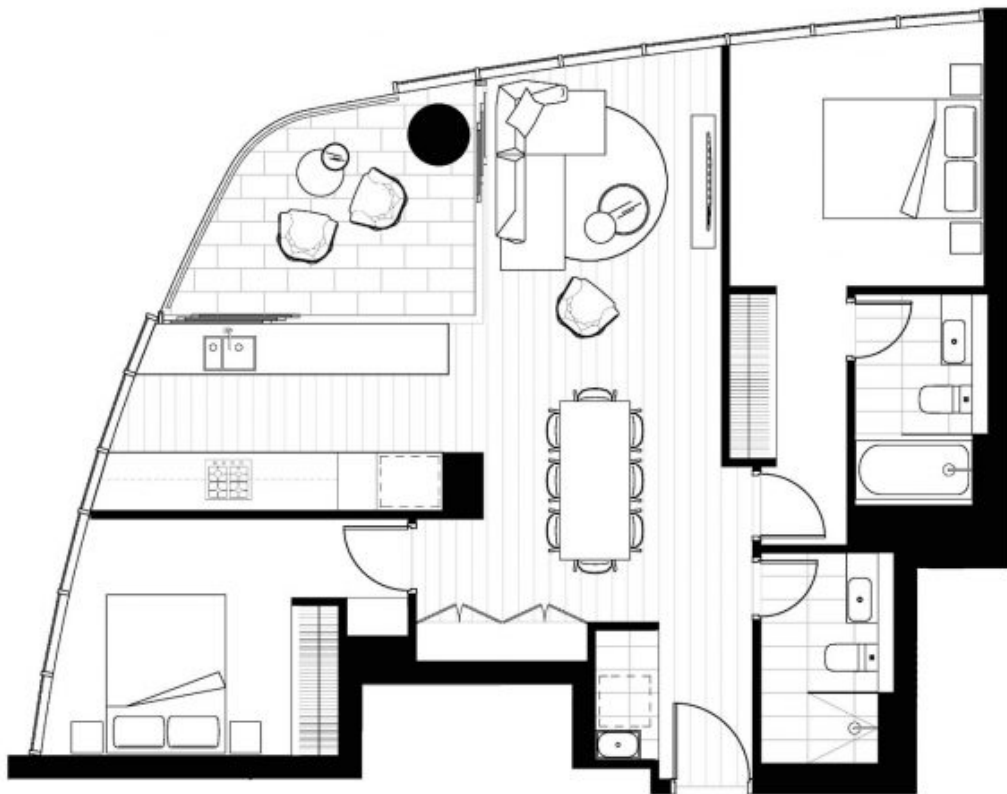
Balcony Area: **10m²**

Total Area: **94m²**

Residence Number

12211	13011	13811	14611
12311	13111	13911	14711
12411	13211	14011	14811
12511	13311	14111	14911
12611	13411	14211	15011
12711	13511	14311	15111
12811	13611	14411	15211
12911	13711	14511	15311

Location



DISCLAIMER

The contents of this page, including all drawings and plans, have been prepared on an indicative basis for illustrative purposes only, do not necessarily reflect the final design or layout, are not necessarily to scale and may be subject to change without notice. While the information in this page has been prepared with due care to the maximum extent permitted by law, Destination Gold Coast Consortium (comprising Destination Gold Coast Pty Ltd, The Star Development Group, Fair Deal Consortium and Chow Tai Fook Enterprises) and their related entities, employees, officers, directors and agents do not make any representation or warranty about the accuracy or completeness of the information in this document and exclude any liability arising in connection with this document.





THE STAR
RESIDENCES
GOLD COAST

1 Bed + 1 Bath Residence

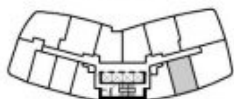
Tower: 1 Type: L
Unit N°: 5 Levels: 21 - 29

Internal Area: 52m²
Balcony Area: 6m²
Total Area: 58m²

Residence Number

12105	12605
12205	12705
12305	12805
12405	12905
12505	

Location



DISCLAIMER

The contents of this page, including all drawings and plans, have been prepared on an indicative basis for illustrative purposes only, do not necessarily reflect the final design or finish, and not necessarily to scale, and may be subject to change without notice. While the information in this page has been prepared with due care, to the maximum extent permitted by law, Destination Gold Coast Constructions (comprising Destination Gold Coast Pty Ltd, The Star Entertainment Group, Fox Star Constructions and Choice To Place Properties) and their related entities, employees, officers, directors and agents do not make any representation or warranty about the accuracy or completeness of the information in this document and exclude any liability arising in connection with this document.

